

TECHNICAL SPECIFICATION


DROP WIRE CLAMP

HYPOCLAMP

DESCRIPTION

The HYPOCLAMP drop clamps are installed on poles and walls to terminate fibre optic flat drop cables (spans up to 70m).

The HYPOCLAMP is composed of a metallic body, a metallic shim and a plastic wedge with an integrant opening bail. The parts are delivered in kits for easiness of installation on the cable.

REF	MODEL	MATERIAL	Ø CABLE		PACK ^G
5129	HYPOCLAMP	Thermoplastic and stainless steel	8 x 4mm	0,04 kg	100

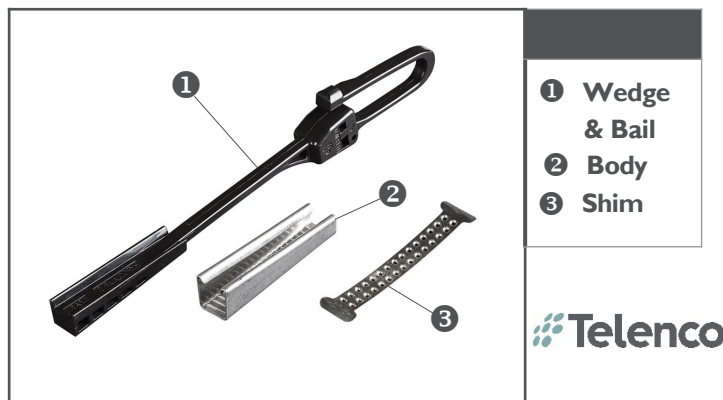
TESTING

This clamp has been qualified in accordance with internationally recognised standards :

- Climatic ageing test according to NF EN C-20-540 standard dated June 2002.
- Corrosion test according to NF EN 60068-2-52 dated December 1996.
- Tensile test according to the technical specification ORANGE CCF/BI/BUBL of 20 May 2010.
- Vibration test according to the technical specification ORANGE CCF/BI/BUBL of 20 May 2010 and the standard NF EN 50289-3-13 d'août 2003 with insertion loss < 0.2 dB.

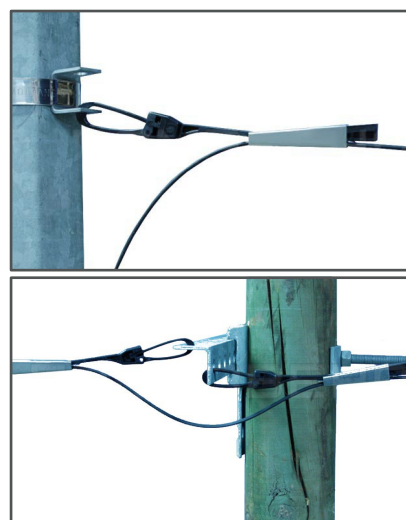
INSTALLATION

- Tension the cable to the required installation load.
- Hang the clamp wedge onto the pole and wall hardware fitting and lock the bail.
- Place the clamp body round the cable.
- Position the shim onto the cable in the clamp body, with the gripping bumps facing the cable.
- Pass the wedge in the large section of the clamp body the initiate the clamping onto the shim + cable.



FEATURES

- Easy and quick installation – no tools required.
- Efficient gripping on most flat FO drops due to the materials used.
- Installation without bending of the cable in the clamp.
- Opened bail for installation in closed or opened hardware : cross-arms, hooks, brackets (min Ø 11 mm).



Non-contractual pictures